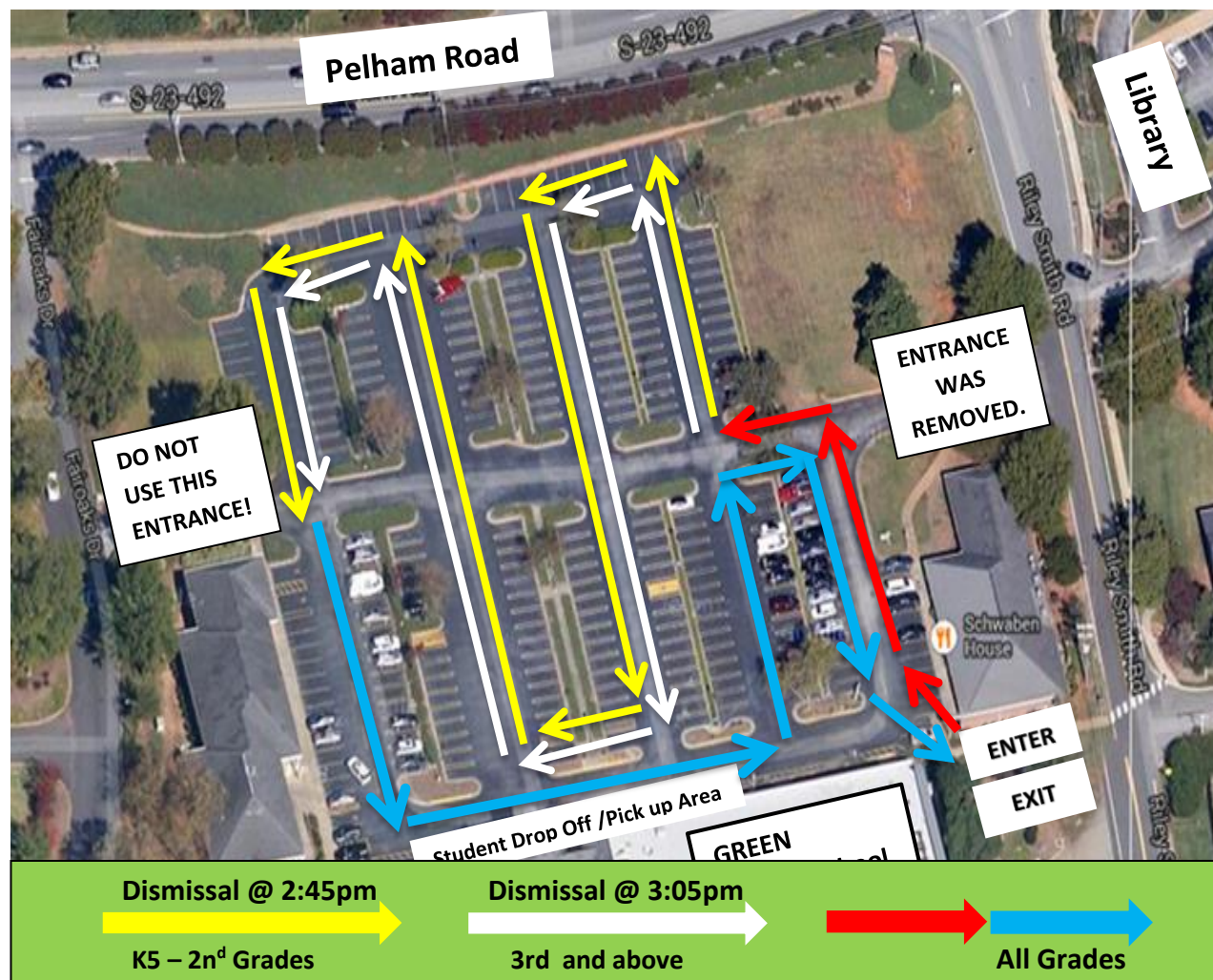




GREEN Charter School Pelham Rd. Campus Traffic Flow Diagram



Carline Procedures

- Enter from Riley Smith Rd ONLY.
- Do not use Fairoaks Drive at any time!**
- Blue, yellow, and white lines are painted on the lot to direct traffic. (Red lines here are really blue on the lot. Red is used here to provide clarity between entrance and exit.)
- Everyone will follow the red lines to enter the carline. Then, K5 – 2nd grades will follow the yellow path and 3rd above grades will follow the white path.
- Once you get to the blue line heading toward the school, merge into a single-file lane, allowing every other car to enter.
- Display car tag in front window.
- Remain in your car or behind the orange parking cones. NO parents on the sidewalk with the students and teachers please.
- If you have children in BOTH dismissal times, arrive AFTER 3:25pm to avoid holding up other drivers.
- NO cell phone use in carline, even on hands-free devices.